

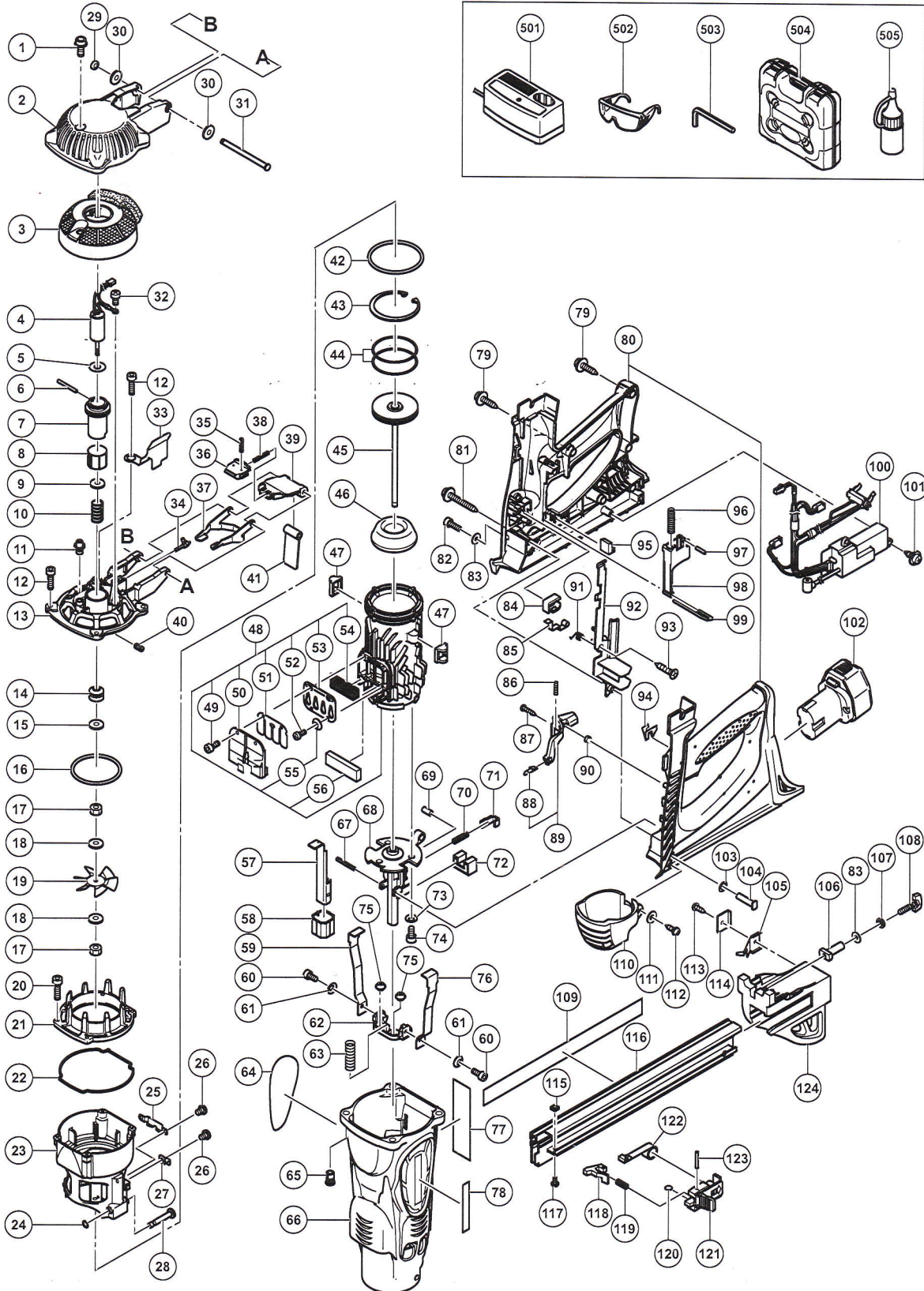
## GAS TOOL PARTS LIST

### ■ GAS CONCRETE NAILER

2010·9·29

Model GNC 40 (Hewi Brand)

(E1)



## PARTS

GNC 40

ITEM NO.	CODE NO.	DESCRIPTION	NO. USED	REMARKS
1	996-399	HEX. SOCKET HD. BOLT (W/FLANGE) M5 X 12	1	
2	886-598	TOP COVER	1	
3	886-129	FILTER	1	
4	885-309	MOTOR	1	
5	885-313	RUBBER WASHER	1	
6	885-318	ROLL PIN D2.5 X 25	1	
7	885-310	MOTOR MOUNT	1	
8	885-314	MOUNT SLEEVE	1	
9	885-320	SHAFT WASHER	1	
10	887-630	MOTOR SPRING	1	
11	885-333	SPARK PLUG (A)	1	
12	887-472	NYLOK HEX. SOCKET HD.BOLT M5 X 20(10 PCS)	4	
13	885-308	CYLINDER HEAD ASS'Y	1	INCLUD. 14, 15
14	886-470	SHAFT COVER	1	
15	886-471	WASHER	1	
16	885-316	O-RING (I.D 59.92)	1	
17	887-479	NUT M4 (10 PCS.)	2	
18	949-423	WASHER M4 (10 PCS.)	2	
19	885-311	FAN	1	
20	949-754	HEX. SOCKET HD. BOLT M4 X 16 (10 PCS.)	4	
21	885-294	CHAMBER HEAD	1	
22	886-133	GASKET (B)	1	
23	885-296	CHAMBER	1	
24	878-607	PLUNGER O-RING	2	
25	885-297	CHAMBER LOCK PLATE	1	
26	887-480	MACHINE SCREW M4 X 6 (10 PCS.)	3	
27	885-306	SWITCH PLATE	1	
28	886-484	PIN (A)	2	
29	880-319	SHAFT RING	1	
30	887-454	BOLT WASHER D5 (BLACK)(10 PCS.)	2	
31	885-277	SHAFT	1	
32	887-480	MACHINE SCREW M4 X 6 (10 PCS.)	1	
33	886-253	WIRING PLATE	1	
34	886-313	ADAPTER	1	
35	887-484	ROLL PIN D2 X 8 (10 PCS.)	2	
36	887-483	LATCH (A)	1	
37	886-141	CELL LEVER (A)	1	
38	887-485	SPRING (A)	1	
39	887-486	CELL COVER (A)	1	
40	886-314	HEX. SOCKET SET SCREW M4 X 5	2	
41	886-131	CELL RUBBER (A)	1	
42	885-283	O-RING (I.D. 66.27)	1	
43	885-285	RETAINING RING	1	
44	886-132	PISTON RING (A)	2	
45	887-616	PISTON (H)	1	
46	885-289	PISTON BUMPER	1	
47	885-284	CHAMBER STOP RUBBER	2	
48	886-465	CYLINDER ASS'Y	1	INCLUD. 49-56
49	886-241	SEAL LOCK HEX. SOCKET HD. BOLT M4 X 10	2	
50	886-467	BUFFER COVER (A)	1	



## PARTS

GNC 40

ITEM NO.	CODE NO.	DESCRIPTION	NO. USED	REMARKS
51	885-290	LEAD VALVE	1	
52	887-481	SEAL LOCK SCREW M4 X 6 (BLACK)	2	
53	886-468	BUFFER PLATE (A)	1	
54	885-292	MESH	1	
55	886-319	CONICAL SPRING H8	2	
56	885-288	MUFFLER	1	
57	887-614	PUSHING LEVER	1	
58	885-692	NOSE CAP	1	
59	887-625	PUSHING LEVER ARM (L)	1	
60	887-622	SEAL LOCK HEX. SOCKET HD. BOLT M5 X 8	2	
61	886-243	BELLEVILLE SPRING M5	2	
62	887-626	PUSHING LEVER CONNECTOR (A)	1	
63	886-245	PUSHING LEVER SPRING (A)	2	
64		NAME PLATE	1	
65	885-304	SCREW M5	4	
66	886-469	HOUSING	1	
67	887-621	ROLL PIN D3 X 25	1	
68	887-618	NOSE	1	
69	887-619	ROLL PIN D3 X 8	1	
70	885-706	SPRING (A)	1	
71	887-620	PUSHING LEVER STOPPER	1	
72	887-615	NOSE RUBBER	1	
73	886-243	BELLEVILLE SPRING M5	3	
74	887-623	SEAL LOCK HEX. SOCKET HD. BOLT M5 X 12	3	
75	885-707	SPRING GUIDE	2	
76	887-627	PUSHING LEVER ARM (R)	1	
77	885-307	INSULATOR SHEET	1	
78	887-649	HEWI PLATE (H)	1	
79	302-086	TAPPING SCREW (W/FLANGE) D4 X 20 (BLACK)	6	
80	887-648	HANDLE SET	1	
81	887-477	TAPPING SCREW (W/FLANGE) D4 X 45 (BLACK)	1	
82	887-624	SEAL LOCK HEX. SOCKET HD. BOLT M5 X 16	1	
83	876-205	WASHER	2	
84	886-473	SWITCH MOUNT (B)	1	
85	885-347	SWITCH ARM	1	
86	885-518	SPRING	1	
87	885-714	TAPPING SCREW D3 X 8	1	
88	886-257	TENSION PLATE (C)	1	
89	886-147	SWITCH LEVER (B) ASS'Y	1	INCLUD. 88
90	886-463	SLEEVE	1	
91	885-337	LOCK BAR SPRING	1	
92	885-339	WIRING COVER	1	
93	885-346	FLAT HD. TAPPING SCREW D4 X 10	1	
94	886-138	LEVER STOPPER	1	
95	886-474	PRISM	1	
96	885-828	TRIGGER SPRING (A)	1	
97	949-551	ROLL PIN D2.5 X 10 (10 PCS.)	1	
98	885-335	TRIGGER	1	
99	887-617	CHAMBER LOCK BAR	1	
100	886-461	WIRING (B)	1	INCLUD. 11

**PARTS**

GNC 40

ITEM NO.	CODE NO.	DESCRIPTION	NO. USED	REMARKS
101	887-476	TAPPING SCREW (W/FLANGE) D4 X 14 (BLACK)	2	
102		BATTERY (GFN 3490B)	2	
103	885-712	WASHER (B)	1	
104	885-711	SHAFT (B)	1	
105	886-990	NAIL STOPPER (A)	1	
106	885-713	SHAFT (C)	1	
107	949-454	SPRING WASHER M5 (10 PCS.)	1	
108	887-629	KNOB	1	
109		WARNING LABEL	1	
110	885-695	DUST COVER	1	
111	875-246	WASHER	2	
112	325-083	TAPPING SCREW (W/FLANGE) D4 X 12 (BLACK)	2	
113	887-628	TAPPING SCREW (W/FLANGE) D4 X 10 (BLACK)	1	
114	886-991	STOPPER PLATE	1	
115	319-166	SQUARE NUT M6	1	
116	886-475	MAGAZINE	1	
117	884-215	HEX. SOCKET HD. BOLT (W/BUTTON) M6 X 7	1	
118	886-477	NAIL FEEDER (A)	1	
119	886-478	SPRING (B)	1	
120	873-093	O-RING (1AP-3)	1	
121	886-476	NAIL FEEDER (B)	1	
122	881-755	RIBBON SPRING	1	
123	949-890	PIN D3 X 20 (10 PCS.)	1	
124	886-479	MAGAZINE COVER	1	

**STANDARD ACCESSORIES**

ITEM NO.	CODE NO.	DESCRIPTION	NO. USED	REMARKS
501		CHARGER (MODEL GFN 3490L)	1	
502	875-769	SAFETY GLASSES	1	
503	887-463	HEX. BAR WRENCH 4MM	1	
504	887-647	CASE	1	
505	886-602	LUBRICANT OILER (B)	1	